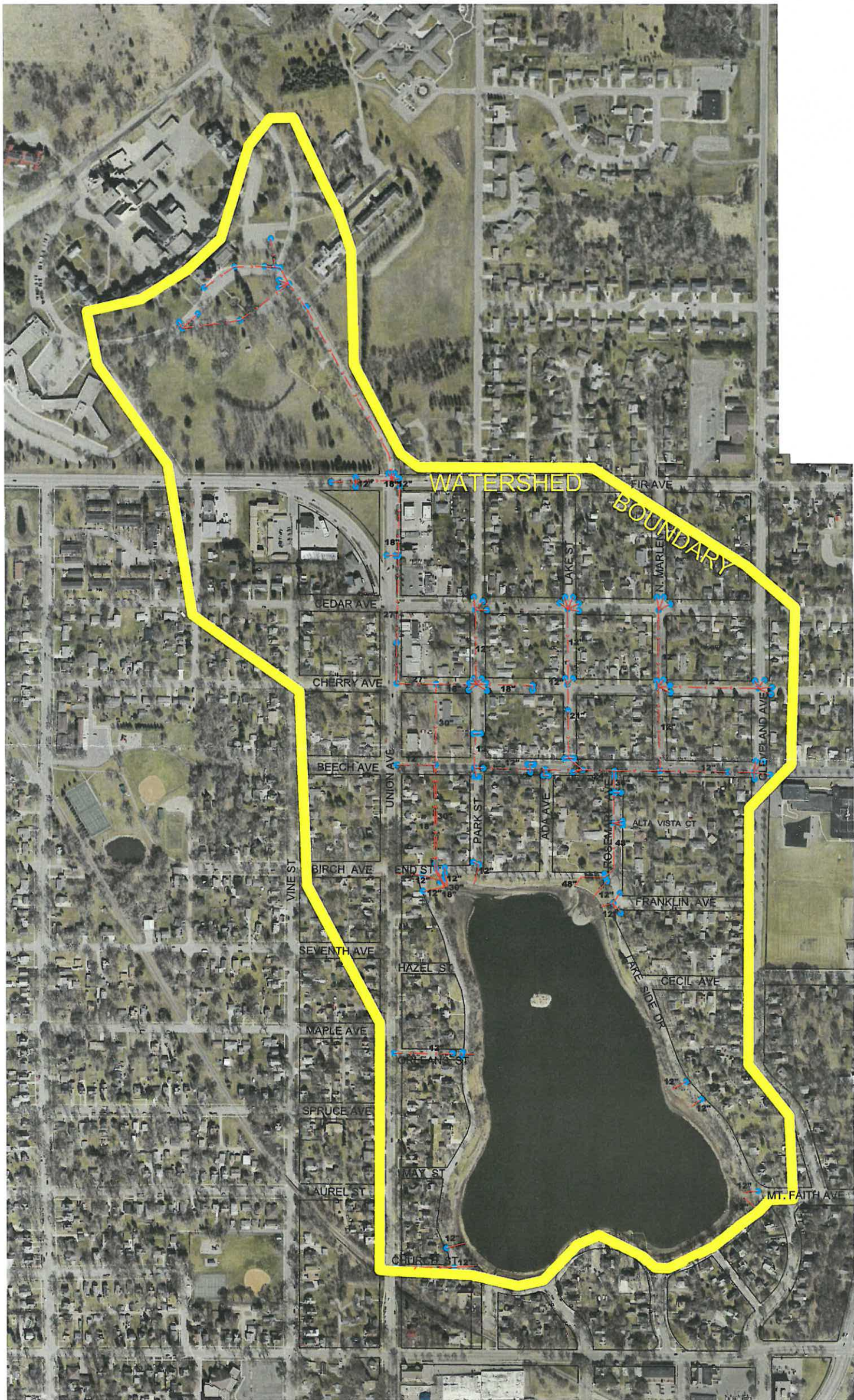
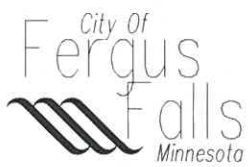


LAKE ALICE WATERSHED MAP



WATERSHED AREA = 232 acres



Interstate Engineering, Inc.
P.O. Box 316
116 East Washington Avenue
Fergus Falls, MN 56538-0316
Ph (218) 739-5545
Fax (218) 739-4814
www.interstateeng.com

Offices in North Dakota, Minnesota, Montana and South Dakota