

SEC. 4 T. 132N. R. 43E

LINE OF GOVT LOT 1, SEC. 4-132-43

51°02'27.14" N 129.42'

N 1/4 COR. SEC. 4-132-43

180°55'19.14" 283.91'

N 28°21'02.02" E 128.14'

S 82°24'11.14" W 128.14'

N 28°21'02.02" E 566.12'

S 17°24'00" E 129.42'

N 28°21'02.02" E 128.14'

N 50°12'27.14" E 142.22'

N 14°08'03.84" E 633.96'

180°55'19.14" 283.91'

N 14°08'03.84" E 633.96'

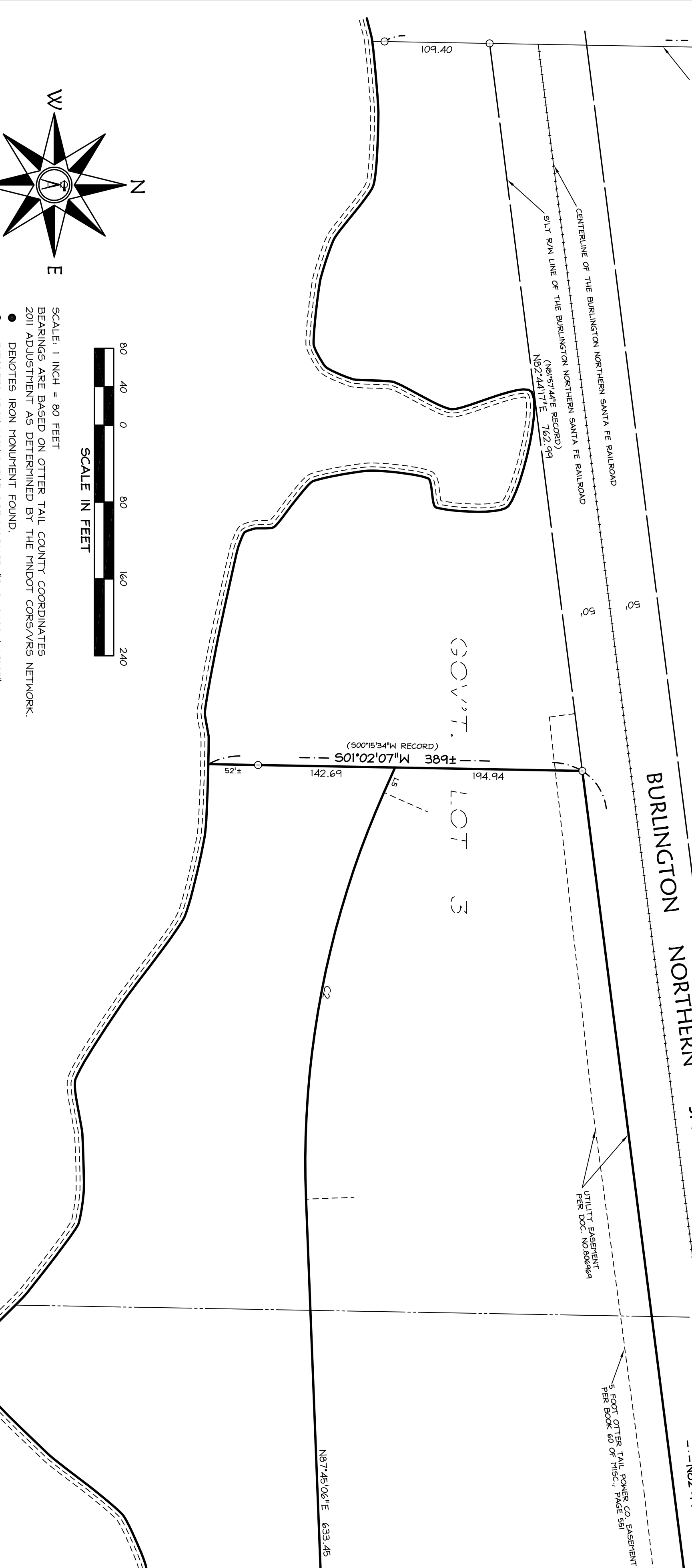
BURLINGTON NORTHERN SANTA FE RAILROAD (OTTER TAIL VALLEY RAILROAD)

N 14°08'03.84" E 633.96'

180°55'19.14" 283.91'

N 14°08'03.84" E 633.96'

180°55'19.14" 283.91'



BRASS MARKS ARE BASED ON OTTER TAIL COUNTY COORDINATES

● DENOTES IRON NAIL FOUND

○ DENOTES CITY MONUMENT SET PAINTED THIS SURVEY

○ DENOTES CITY MONUMENT SET PAINTED THIS SURVEY

○ DENOTES IRON NAIL SET

STATION	BEARING	DISTANCE	STATION	BEARING	DISTANCE
1	51°02'27.14" N	129.42'	10	180°55'19.14" S	283.91'
2	N 14°08'03.84" E	633.96'	11	N 28°21'02.02" E	128.14'
3	180°55'19.14" S	283.91'	12	S 82°24'11.14" W	128.14'
4	N 14°08'03.84" E	633.96'	13	N 28°21'02.02" E	566.12'
5	N 28°21'02.02" E	128.14'	14	S 17°24'00" E	129.42'
6	N 28°21'02.02" E	128.14'	15	N 28°21'02.02" E	128.14'
7	N 50°12'27.14" E	142.22'	16	N 14°08'03.84" E	633.96'
8	N 14°08'03.84" E	633.96'	17	180°55'19.14" S	283.91'
9	180°55'19.14" S	283.91'	18	N 14°08'03.84" E	633.96'

CURVE	POINT	ARC LENGTH	CHORD BEARING	CHORD DISTANCE	CHORD ANGLE
1	12	128.14'	S 54°31'51.92" E	128.14'	54.53°
1	13	128.14'	S 54°31'51.92" E	128.14'	54.53°
1	14	128.14'	S 54°31'51.92" E	128.14'	54.53°
1	15	128.14'	S 54°31'51.92" E	128.14'	54.53°
1	16	128.14'	S 54°31'51.92" E	128.14'	54.53°
1	17	128.14'	S 54°31'51.92" E	128.14'	54.53°
1	18	128.14'	S 54°31'51.92" E	128.14'	54.53°
1	19	128.14'	S 54°31'51.92" E	128.14'	54.53°
1	20	128.14'	S 54°31'51.92" E	128.14'	54.53°
1	21	128.14'	S 54°31'51.92" E	128.14'	54.53°
1	22	128.14'	S 54°31'51.92" E	128.14'	54.53°
1	23	128.14'	S 54°31'51.92" E	128.14'	54.53°
1	24	128.14'	S 54°31'51.92" E	128.14'	54.53°
1	25	128.14'	S 54°31'51.92" E	128.14'	54.53°
1	26	128.14'	S 54°31'51.92" E	128.14'	54.53°
1	27	128.14'	S 54°31'51.92" E	128.14'	54.53°
1	28	128.14'	S 54°31'51.92" E	128.14'	54.53°
1	29	128.14'	S 54°31'51.92" E	128.14'	54.53°
1	30	128.14'	S 54°31'51.92" E	128.14'	54.53°
1	31	128.14'	S 54°31'51.92" E	128.14'	54.53°
1	32	128.14'	S 54°31'51.92" E	128.14'	54.53°
1	33	128.14'	S 54°31'51.92" E	128.14'	54.53°
1	34	128.14'	S 54°31'51.92" E	128.14'	54.53°
1	35	128.14'	S 54°31'51.92" E	128.14'	54.53°
1	36	128.14'	S 54°31'51.92" E	128.14'	54.53°
1	37	128.14'	S 54°31'51.92" E	128.14'	54.53°
1	38	128.14'	S 54°31'51.92" E	128.14'	54.53°
1	39	128.14'	S 54°31'51.92" E	128.14'	54.53°
1	40	128.14'	S 54°31'51.92" E	128.14'	54.53°
1	41	128.14'	S 54°31'51.92" E	128.14'	54.53°
1	42	128.14'	S 54°31'51.92" E	128.14'	54.53°
1	43	128.14'	S 54°31'51.92" E	128.14'	54.53°
1	44	128.14'	S 54°31'51.92" E	128.14'	54.53°
1	45	128.14'	S 54°31'51.92" E	128.14'	54.53°
1	46	128.14'	S 54°31'51.92" E	128.14'	54.53°
1	47	128.14'	S 54°31'51.92" E	128.14'	54.53°
1	48	128.14'	S 54°31'51.92" E	128.14'	54.53°
1	49	128.14'	S 54°31'51.92" E	128.14'	54.53°
1	50	128.14'	S 54°31'51.92" E	128.14'	54.53°
1	51	128.14'	S 54°31'51.92" E	128.14'	54.53°
1	52	128.14'	S 54°31'51.92" E	128.14'	54.53°
1	53	128.14'	S 54°31'51.92" E	128.14'	54.53°
1	54	128.14'	S 54°31'51.92" E	128.14'	54.53°
1	55	128.14'	S 54°31'51.92" E	128.14'	54.53°
1	56	128.14'	S 54°31'51.92" E	128.14'	54.53°
1	57	128.14'	S 54°31'51.92" E	128.14'	54.53°
1	58	128.14'	S 54°31'51.92" E	128.14'	54.53°
1	59	128.14'	S 54°31'51.92" E	128.14'	54.53°
1	60	128.14'	S 54°31'51.92" E	128.14'	54.53°
1	61	128.14'	S 54°31'51.92" E	128.14'	54.53°
1	62	128.14'	S 54°31'51.92" E	128.14'	54.53°
1	63	128.14'	S 54°31'51.92" E	128.14'	54.53°
1	64	128.14'	S 54°31'51.92" E	128.14'	54.53°
1	65	128.14'	S 54°31'51.92" E	128.14'	54.53°
1	66	128.14'	S 54°31'51.92" E	128.14'	54.53°
1	67	128.14'	S 54°31'51.92" E	128.14'	54.53°
1	68	128.14'	S 54°31'51.92" E	128.14'	54.53°
1	69	128.14'	S 54°31'51.92" E	128.14'	54.53°
1	70	128.14'	S 54°31'51.92" E	128.14'	54.53°
1	71	128.14'	S 54°31'51.92" E	128.14'	54.53°
1	72	128.14'	S 54°31'51.92" E	128.14'	54.53°
1	73	128.14'	S 54°31'51.92" E	128.14'	54.53°
1	74	128.14'	S 54°31'51.92" E	128.14'	54.53°
1	75	128.14'	S 54°31'51.92" E	128.14'	54.53°
1	76	128.14'	S 54°31'51.92" E	128.14'	54.53°
1	77	128.14'	S 54°31'51.92" E	128.14'	54.53°
1	78	128.14'	S 54°31'51.92" E	128.14'	54.53°
1	79	128.14'	S 54°31'51.92" E	128.14'	54.53°
1	80	128.14'	S 54°31'51.92" E	128.14'	54.53°
1	81	128.14'	S 54°31'51.92" E	128.14'	54.53°
1	82	128.14'	S 54°31'51.92" E	128.14'	54.53°
1	83	128.14'	S 54°31'51.92" E	128.14'	54.53°
1	84	128.14'	S 54°31'51.92" E	128.14'	54.53°
1	85	128.14'	S 54°31'51.92" E	128.14'	54.53°
1	86	128.14'	S 54°31'51.92" E	128.14'	54.53°
1	87	128.14'	S 54°31'51.92" E	128.14'	54.53°
1	88	128.14'	S 54°31'51.92" E	128.14'	54.53°
1	89	128.14'	S 54°31'51.92" E	128.14'	54.53°
1	90	128.14'	S 54°31'51.92" E	128.14'	54.53°
1	91	128.14'	S 54°31'51.92" E	128.14'	54.53°
1	92	128.14'	S 54°31'51.92" E	128.14'	54.53°
1	93	128.14'	S 54°31'51.92" E	128.14'	54.53°
1	94	128.14'	S 54°31'51.92" E	128.14'	54.53°
1	95	128.14'	S 54°31'51.92" E	128.14'	54.53°
1	96	128.14'	S 54°31'51.92" E	128.14'	54.53°
1	97	128.14'	S 54°31'51.92" E	128.14'	54.53°
1	98	128.14'	S 54°31'51.92" E	128.14'	54.53°
1	99	128.14'	S 54°31'51.92" E	128.14'	54.53°
1	100	128.14'	S 54°31'51.92" E	128.14'	54.53°

I HEREBY CERTIFY THAT THIS SURVEY, PLAN OR REPORT WAS PREPARED BY ME OR UNDER MY DIRECT SUPERVISION UNDER THE LAWS OF THE STATE OF MINNESOTA DATED THIS 19TH DAY OF APRIL, 2021.

ANDERSON LAND SURVEYING, INC.
 PHILIP ANDERSON, SURVEYOR
 313 SOUTH MAIN STREET, FERGUS FALLS, MN 56547 (888) 733-8269
 (800) 300-9276

DAVID A. ANDERSON
 PROFESSIONAL LAND SURVEYOR
 MINNESOTA LICENSE NO. 19620

CITY OF FERGUS FALLS

CERTIFICATE OF SURVEY FOR

DATE OF SURVEY	APRIL 19, 2021
DATE OF RECORDING	APRIL 20, 2021
RECORD NO.	190-21
RECORD PAGE	190-21
PLAT NO.	9002
PLAT SHEETS	1 OF 1
PLAT AREA	401.81 ACRES
PLAT BEARING	S 54°31'51.92" E
PLAT DISTANCE	128.14'