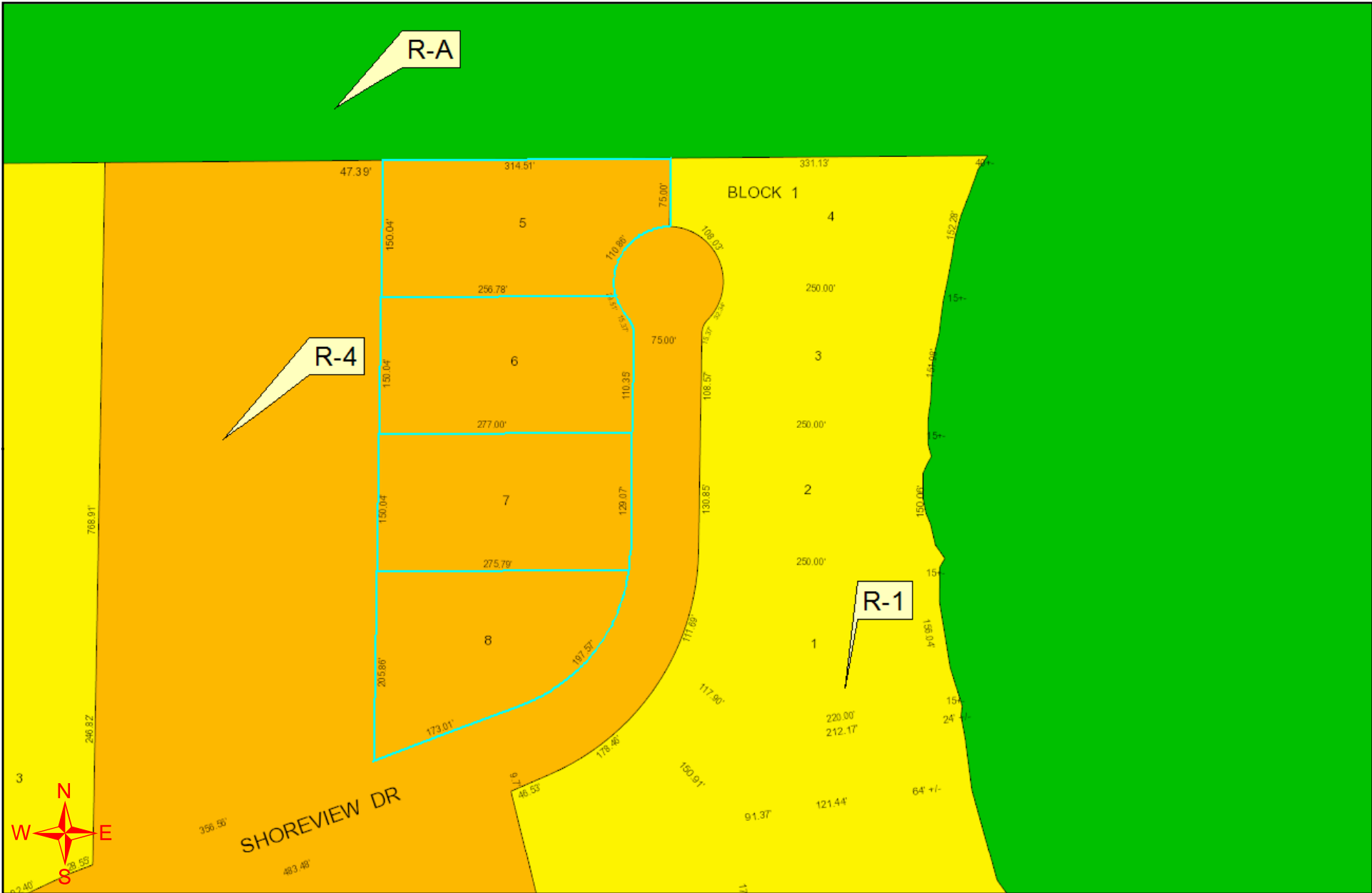




Rezone R-4 to R-1 - 3.8 acres

This map has been compiled from information on file at the City of Fergus Falls Engineering Department. The City of Fergus Falls makes no representation and assumes no liability for errors, omissions, or inaccuracies contained on this map. This map should not be used for boundary survey information.



1 inch = 150 feet

### Current Zoning - Case R-2021-2

This map has been compiled from information on file at the City of Fergus Falls Engineering Department. The City of Fergus Falls makes no representation and assumes no liability for errors, omissions, or inaccuracies contained on this map. This map should not be used for boundary survey information.